

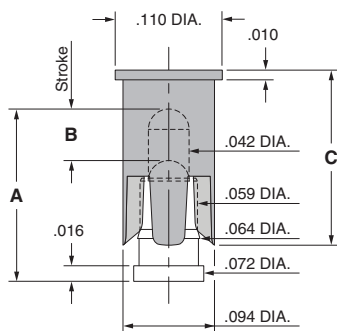
# SPRING-LOADED CONNECTORS

## SERIES 806 • REMOVABLE PICK & PLACE CAP, SPRING-LOADED PINS • SURFACE MOUNT

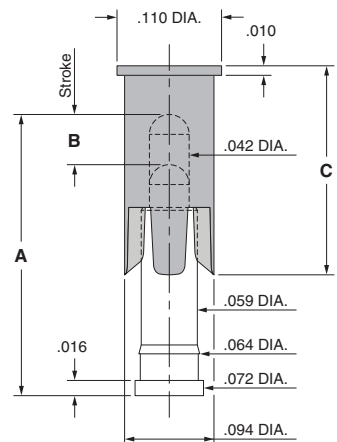


- Surface mount spring-loaded pins with removable pick & place cap are available in nine heights from .137" to .295" with a working travel of either .0195" or .0275"
- Spring pins used in this series are Mill-Max 0900-X and 0907-X (see page 23 for more details)
- The pick & place cap allows individual spring-loaded contacts to be packaged on tape and reel for automated assembly. The caps are easily removed after soldering leaving only the spring pin on the board.
- Pick & place cap material is high temperature thermoplastic suitable for most SMT soldering processes
- Supplied on 16 mm wide carrier tape, 13" reels; packaging per EIA-481. See below for ordering information

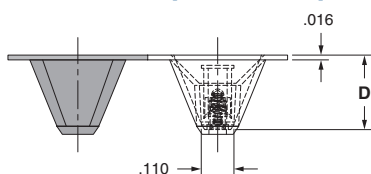
### Series 806 (Contact Style 1,2,3,4,10,11)



### Series 806 (Contact Style 12,13 & 14)



### Series 806 (Tape Pocket Depth)



## ORDERING INFORMATION

### Series 806 (Tape & Reel Packaged)

806-22-001-30-0XX191

Specify contact style 1-4  
Specify contact style 10-14

| Contact Style | Initial Height (A) | Working Travel | Full Stroke Range (B) | Sleeve Height (C) | Tape Depth (D) | Quantity per Reel |
|---------------|--------------------|----------------|-----------------------|-------------------|----------------|-------------------|
| 1             | .137               | .0195          | .030-.039             | .180              | .252           | 780               |
| 2             | .155               | .0195          | .030-.039             | .180              | .252           | 780               |
| 3             | .177               | .0275          | .050-.055             | .180              | .252           | 780               |
| 4             | .197               | .0275          | .050-.055             | .180              | .252           | 780               |
| 10            | .217               | .0275          | .050-.055             | .220              | .285           | 750               |
| 11            | .236               | .0275          | .050-.055             | .220              | .285           | 750               |
| 12            | .255               | .0275          | .050-.055             | .220              | .361           | 550               |
| 13            | .275               | .0275          | .050-.055             | .220              | .361           | 550               |
| 14            | .295               | .0275          | .050-.055             | .220              | .361           | 550               |

### Technical Specifications

#### Materials:

Contact piston & base: Machined copper alloy plated 20 $\mu$ " gold over 100 $\mu$ " nickel

Spring (Contact style 1-14): Beryllium copper-plated 10 $\mu$ " gold

Insulator: High temperature thermoplastic, rated UL94 V-0

#### Mechanical:

Spring force @ initial height (A) (Contact style 1-14): 25 grams

Spring force @ mid stroke (B/2) (Contact style 1-14): 60 grams

Durability: Up to 1,000,000 cycles

#### Electrical:

Current rating: 2A (continuous), 3A (peak) per contact

Contact resistance: 20m $\Omega$  max.

Insulation resistance: 10,000M $\Omega$  min.

RoHS-2  
2011/65/EU

